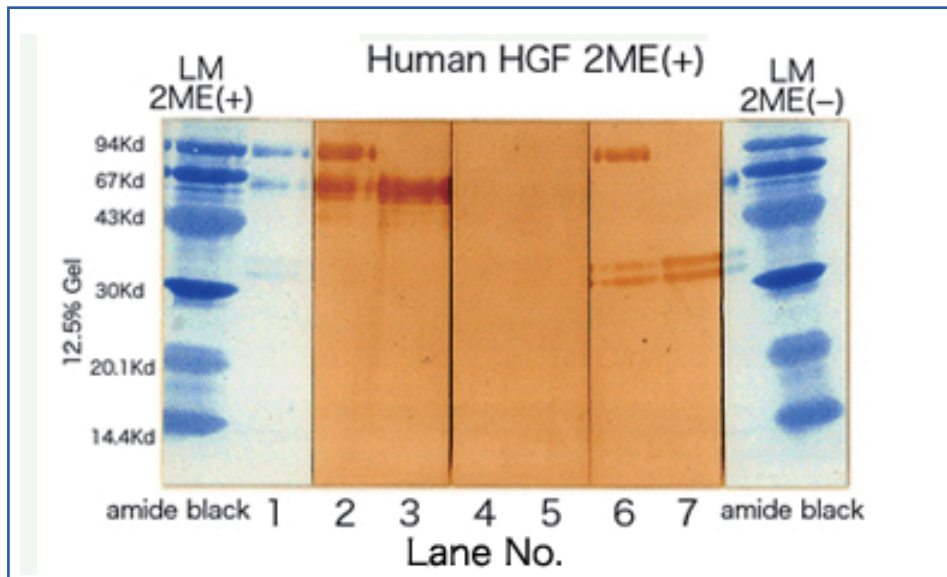
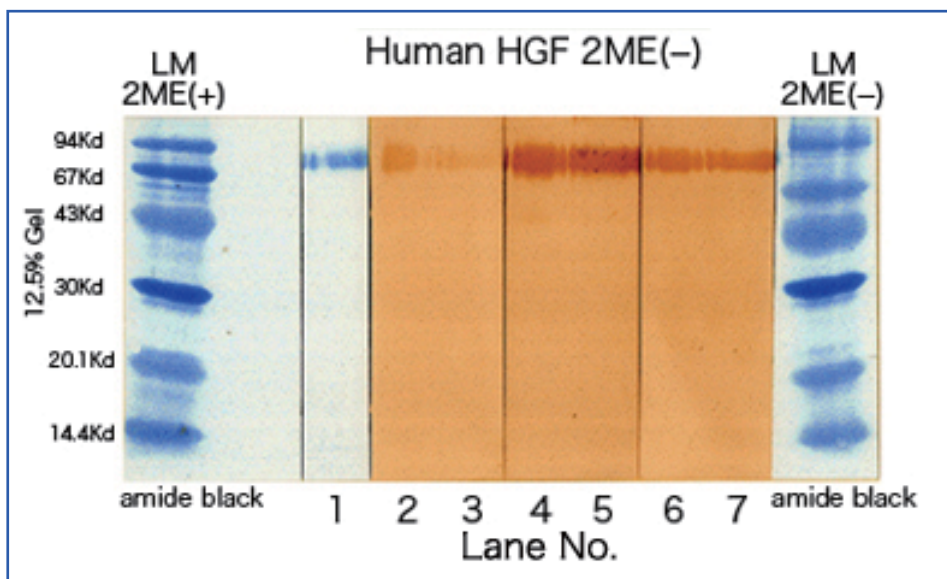


Human HGF Western-blot



Reduction Conditions : 1% 2ME, 100°C, 5min (0.1% SDS)



Lane No.	HGF	Antibody
1	Single and double-chain form	(amide black)
2	Single and double-chain form	Hyb-K3121
3	Double-chain form	Hyb-K3121
4	Single and double-chain form	Hyb-T6912
5	Double-chain form	Hyb-T6912
6	Single and double-chain form	Hyb-T7156
7	Double-chain form	Hyb-T7156